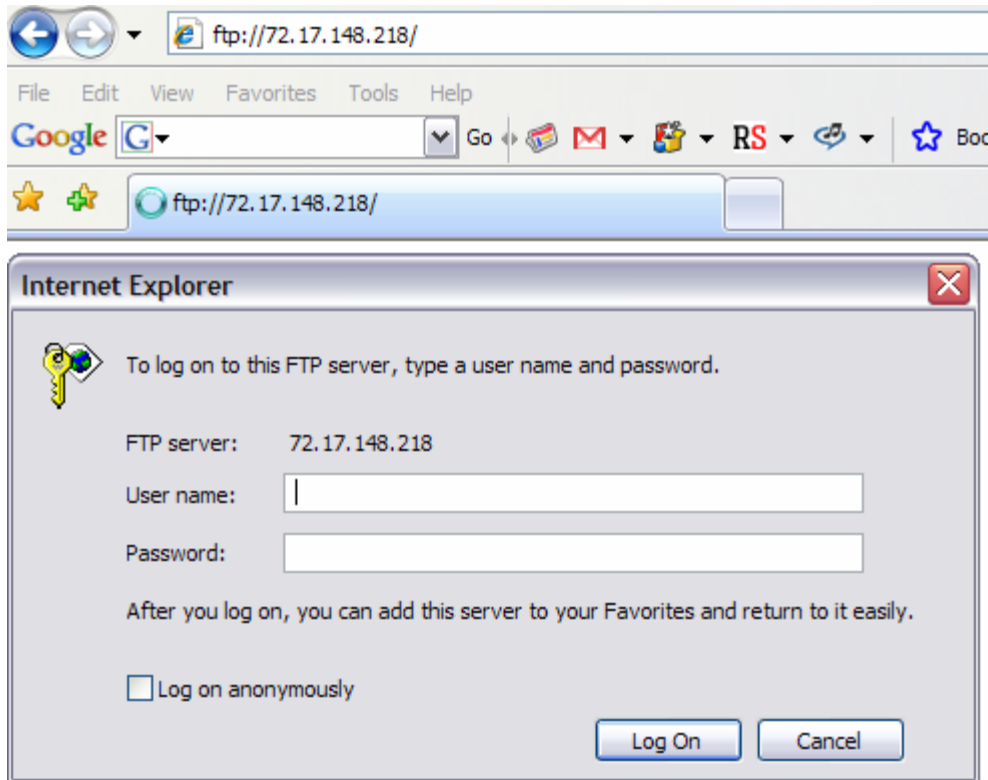
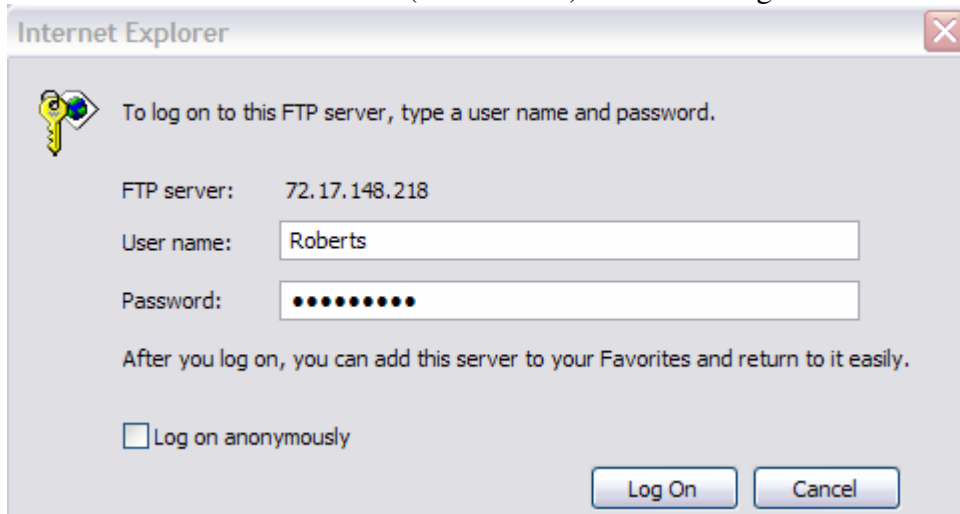


Client Remote Access

- From a Web browser, type the FTP server IP address (ex:72.17.148.218), the Dialog box below will appear



- Enter Username and Password (ex: RobertS) then click Log On



- Click the Download folder for Read only files

FTP root at 72.17.148.218

To view this FTP site in Windows Explorer, click **Page**, and then click **Open FTP Site in Windows Explorer**.

03/28/2008 10:38AM Directory [Download](#)

- Click on the filename (Test 1.doc), to open, save or print the file



FTP directory /Download/ at 72.17.148.218

To view this FTP site in Windows Explorer, click **Page**, and then click **Open FTP Site in Windows Explorer**.

[Up to higher level directory](#)

10/15/2007 09:58PM

19,968 [Test 1.doc](#)

